

INTERNATIONAL MONETARY FUND

How Do Adaptive Learning Expectations Rationalize Stronger Monetary Policy Response in Brazil?

Allan Gloe Dizioli, Hou Wang

WP/23/19

IMF Working Papers describe research in progress by the author(s) and are published to elicit comments and to encourage debate.

The views expressed in IMF Working Papers are those of the author(s) and do not necessarily represent the views of the IMF, its Executive Board, or IMF management.

2023
JAN



WORKING PAPER

IMF Working Paper
Research Department

How Do Adaptive Learning Expectations Rationalize Stronger Monetary Policy Response in Brazil?

Prepared by Allan Gloe Dizioli and Hou Wang*

Authorized for distribution by Rafael Portillo
January 2023

IMF Working Papers describe research in progress by the author(s) and are published to elicit comments and to encourage debate. The views expressed in IMF Working Papers are those of the author(s) and do not necessarily represent the views of the IMF, its Executive Board, or IMF management.

ABSTRACT: This paper estimates a standard Dynamic Stochastic General Equilibrium (DSGE) model that includes a wage and price Phillip's curves with different expectation formation processes for Brazil and the USA. Other than the standard rational expectation process, we also use a limited rationality process, the adaptive learning model. In this context, we show that the separate inclusion of a labor market in the model helps to anchor inflation even in a situation of adaptive expectations, a positive output gap and inflation above target. The estimation results show that the adaptive learning model does a better job in fitting the data in both Brazil and the USA. In addition, the estimation shows that expectations are more backward-looking and started to drift away sooner in 2021 in Brazil than in the USA. We then conduct optimal policy exercises that prescribe early monetary policy tightening in the context of positive output gaps and inflation far above the central bank target.

RECOMMENDED CITATION: Dizioli, Allan, Hou Wang, 2023, "How Do Adaptive Learning Expectations Rationalize Stronger Monetary Policy Response in Brazil?", IMF Working Papers

JEL Classification Numbers:	E2, E30, E52, E37, J6
Keywords:	DSGE; Inflation dynamics; optimal monetary policy; Forecasting and Simulation; Bayesian estimation.
Author's E-Mail Address:	adizioli@imf.org , HWang2@imf.org

* 1 International Monetary Fund Research Department. 700 19th St NW, Washington, DC 20431, USA. Corresponding author is [link](#).

WORKING PAPERS

How do adaptive learning expectations rationalize stronger monetary policy response in Brazil?

Prepared by **Allan Gloe Dizioli and Hou Wang**¹

¹ We thank Rafael Portillo, Matteo Ghilardi, Romain Bouis, Woon Gyu Choi and Pierre Guerin for their useful comments. The views expressed in this Working Papers are those of the authors and do not necessarily represent the views of the IMF, its Executive Board, or IMF management.

	Contents	Page
I.	Introduction	4
II.	Literature Review	6
III.	Model environment	8
	A. Workhorse model	8
	B. Expectation formation processes	10
IV.	Data and Model Estimation	12
	A. Data	12
	B. Model fit	15
V.	Model simulation results	16
	A. Comparison of the estimation results for Brazil and the USA	16
	B. Adaptive learning expectations could increase the cost of stabilization	18
	C. Optimal monetary policy discussion	22
VI.	Conclusions	23
	References	26

Tables

1.	Prior Distribution of the Estimated Parameters	14
2.	Posterior Estimates for RE and AL Models	15
3.	In-Sample Forecast Performance for RE and AL Models	15
4.	Out-of-Sample Forecast Performance for RE and AL Models	16

Figures

1.	Brazil: Low wage workers suffered larger employment losses	13
2.	Real composition-constant wages did not increase as much	14
3.	Brazil: Shock decomposition	18
4.	USA: Shock decomposition	19
5.	Inflation and wages expectations respond to past values by more in Brazil	20

6.	Impulse response functions for specific shocks	20
7.	Impulse response functions for specific shocks	21
8.	Inflation is stickier when expectations are adaptive learning	22
9.	The central bank should front-load tightening and then ease	24

I. INTRODUCTION

After the introduction of inflation targeting regimes in many countries around the world, there was a sense that a relatively stable inflation and well-anchored inflation expectations ("the great moderation") would be the new normal in most countries. The pandemic shock and its repercussions accompanied a surge in global inflation not seen since the 1980s. As inflation spiked and remained high for several months, inflation expectations also started to drift higher. In this context, a better understanding of inflation dynamics and the implication for monetary policy is pressing at the current juncture.

Another interesting development presented in the second year of the pandemic was the earlier responses from EM central banks to the bad inflation news. Is there any particular feature to these economies that justifies this earlier response? What kind of role do expectation formation processes play in shaping these decisions? We explore these questions through the lens of a canonical economic model of firm price setting and labor markets under different expectation formation processes.

Most of those canonical models assume that economic agents make intertemporal decisions under rational expectations (RE) assumptions. This means that economic agents have full information set, and form expectations consistently with the underlying model and the policy environment. Since the birth of the first canonical monetary policy model with RE, a number of frictions have been added, such as consumption habit formation and indexation to lagged inflation, to better account for the persistence of economic variables observed in the data.

Motivated by the need to better model the expectations formation and to match the inertia of macroeconomic variables, a recent growing literature proposed a deviation from the standard RE assumption. In particular, it is assumed that economic agents do not know about the underlying model, and they form their expectations based on a simple statistical model with a smaller set of observed variables than the full information set. Those agents do update their beliefs about the underlying economic relations when new data becomes available (thus it is called adaptive learning, AL).

Our paper discussed the results of an estimated small DSGE model in which agents form expectations under AL. A comparison of the empirical performance of the AL model with the RE model shows that the AL model performs better in both in-sample and out-of-sample fore-

casts. The results also show that the AL mechanism creates inflation inertia that increases the cost of inflation stabilization.

There are three key results in our paper. In a context of positive output gap and rising inflation, we show that the central bank's future interest rate path would be steeper under AL expectations than under RE expectations because with the latter expectations provide an additional anchor and a self-enforcing tendency. Expectations in the AL model are always more inertial and harder to control once they start drifting away from the target. This result resembles the one found in Orphanides and Williams (2004) that it is optimal to act aggressively to subdue fluctuations in expectations. Our estimation exercise delivered the paper's second key result. It shows that inflation expectations move by more in Brazil than the USA when shocks hit the economy. The adaptive nature of inflation expectations has likely propelled the Brazilian central bank to be aggressive in the pursuit of anchoring inflation expectations, which is optimal from a loss-minimizing policy perspective.¹

The third main contribution comes from our modelling strategy. We show that the separate inclusion of a labor market in the model helps to anchor inflation even in a situation of adaptive expectations, a positive output gap and inflation above target. A price Phillip's curve that only includes the output gap, as in Cochrane (2022), and not a separate labor sector would predict that, under adaptive expectations, the only way to lower inflation is with a negative output gap. We show that a negative real wage gap can co-exist with a positive output gap, depending on the combination of shocks, and enable an anchoring of inflation even in the case when the output gap is positive and expectations are fully adaptive.

Our paper also discusses the implication for optimal monetary policy when private agents form their expectations based on AL model. When inflationary shocks are present and the output gap is positive, it is optimal for monetary policy to respond sooner, more strongly and then ease in an optimal monetary policy framework than under the estimated monetary policy reaction function. The goal is to avoid high inflation to become entrenched under AL. More aggressive policy actions are needed to anchor inflation and inflation expectations.

The rest of the paper is organized as follows: Section 2 discusses the related literature; Section 3 presents the model. In particular, we focus on the modeling of the expectation formation mechanism; Section 4 contains the data discussion and estimation results; Section 5

¹We are arguing that just the fact that inflation expectations move by more when hit by a shock is enough to justify an earlier monetary policy tightening. However, of course, there could be other explanations for an earlier monetary policy response, such as the fear of capital flight owing to uncontrolled inflation

presents the results with scenario analysis in a context of positive output gap and inflation comparing the models for Brazil and the USA. Moreover, it discusses the optimal monetary policy and mechanisms through which a central bank affects inflation; and Section 5 concludes the paper.

II. LITERATURE REVIEW

Our way to model adaptive learning expectations and its estimation strategy mostly builds on the work by Slobodyan and Wouters (2012b) and Slobodyan and Wouters (2012a). We extend their work in three dimensions. First, we use state-dependent conditional forecasting for our scenario analysis. Second, we apply optimal-control monetary policy on the model and compare the policy responses from an estimated reaction function. Third, we estimate a different benchmark model on both the U.S. and Brazil, which sheds light on the difference in expectations formation between an advanced economy and an emerging one.

The way that we set up agent's expectations situates our paper in the adaptive learning literature first advocated by Evans and Honkapohja (2001). The main idea from the learning literature is to replace the expected terms in intertemporal optimal conditions with an ad-hoc forecasting model that agents use to form expectations and update in every period using observed data, see also (Cho and Kasa (2015)) and (Eusepi and others (2019)). Our contribution to this literature is two-fold: first we discuss the introduction of optimal monetary policy in a model where expectations could de-anchor and point out the mechanism through which monetary policy can affect expectations. Second, we estimate the model for an emerging economy, Brazil, to compare how the learning mechanisms differ in those economies and what the implications are for the macroeconomic dynamics and monetary policy when a shock hits these economies.

In terms of the adaptive learning literature applied for Brazil, da Gama Machado (2012) assessed the role of asset price misalignment in monetary policy in an adaptive learning context, but using a calibrated model with constant coefficients. Instead, our paper estimates an adaptive learning model with time-varying learning parameters that depend on realized outcomes through a Kalman filter updating process. To the best of our knowledge, our paper is the first to estimate such models in the Brazilian context.

Our paper is also related to the vast literature that covers the impact of central bank credibility on inflation. Erceg and Levin (2003) develops a model that agents learn about the central bank's inflation target observing policy decisions and show that inflation and output responses can be highly persistent. We also show that inflation becomes more inertial with adaptive learning and less anchored inflation expectations. In terms of empirical work, Val and others (2017) and Ferreira, Goes, and Arruda (2018) measure Brazil Central Bank's credibility and its impact on inflation dynamics.

Our empirical result that the adaptive learning model outperforms the rational expectation model for both Brazil and the USA are similar to what Milani (2007) and Eusepi, Giannoni, and Preston (2018) show for the USA. Different from these papers, we estimate the model for an emerging economy and with time varying beliefs. Other than a better models performance, the adaptive learning model implies that forecast errors are correlated with forecast revisions, a feature of expectations documented empirically by Coibion and Gorodnichenko (2015).

Our results suggest that the empirical formulation of the adaptive learning mechanism varies between countries. In places where inflation expectations have a larger backward-looking component, more aggressive monetary policy reactions are warranted in response to shocks. This is consistent with the finding that advanced economies tend to have better anchoring of long-term inflation expectations than emerging market economies (IMF (2016), IMF (2018), Ha, Kose, and Ohnsorge (2019), Kamber, Mohanty, and Morley (2020), Bems and others (2021), among others). If as our empirical results show, inflation expectations are more 'adaptive' in certain economies, it raises the question of whether recent global factors that have put upward pressure on inflation (such as elevated commodity price and supply-chain shortages) could lead to a sustained period of high inflation levels and inflation variability in those places going forward.

Finally, our result that optimal monetary policy should respond more to inflation under adaptive learning when inflation is away from target has similarities with Orphanides and Williams (2004) that obtain that with non-rational expectations, monetary policy should respond more to inflation in order to subdue volatile expectations. However, when inflation are well-anchored, monetary policy should not respond as much and this has similarities with Eusepi, Giannoni, and Preston (2018) that find that monetary policy cannot and should not respond strongly to inflation fluctuations.

III. MODEL ENVIRONMENT

A. Workhorse model

Our model is based on Galí, Smets, and Wouters (2012), Smets and Wouters model. The main feature of this model is the existence of an Union that decides both the wage and household's labor supply decisions. In particular, each household has a simple consumption/saving decision to make based on the following problem:

$$\max_{C_t, B_{t+1}} E_0 \sum_{t=0}^{\infty} \beta^t \left[\log(C_t) - \int_0^1 \frac{l_{t,j}^{1+\vartheta}}{1+\vartheta} dj \right], \quad (1)$$

and the budget constraint of the household is given by

$$P_t C_t + B_{t+1} \leq B_t R_{t-1} + \int_0^1 W_{t,j} l_{t,j} dj + prof_t, \quad \text{for all } t \quad (2)$$

where P_t , is the price of consumption, B_t is savings, R_t is the real gross interest rates, $W_{t,j}$ for labor type $j \in (0, 1)$ is the wage level chosen by the union, $l_{t,j}$ is the value implied by the demand curve for labor and $prof_t$ are profits net of lump sum government taxes. After linearizing the Euler equation around the efficient steady state, we obtain the familiar IS curve to be later estimated:

$$\hat{x}_t = E_t [\hat{x}_{t+1} - (\hat{i}_t - \hat{\pi}_{t+1})] + shk_t^y, \quad (3)$$

where \hat{x} is the output gap, \hat{i}_t and $\hat{\pi}_{t+1}$ are the interest rate and price deviations from steady state, respectively. The shock term, shk^x follows an $AR(1)$ process:

$$shk_t^x = \rho_x shk_{t-1}^x + \varepsilon_t^x, \quad (4)$$

The labor market is operated by perfectly competitive labor contractors that choose N_t and $l_{t,j}$ to maximize profits:

$$\max_{N_t, l_{t,j}} W_t N_t - \int_0^1 W_{t,j} l_{t,j} dj, \quad (5)$$

These labor contractors are subject to the wages chosen by Unions and the following aggregation technology:

$$N_t = \left[\int_0^1 l_{t,j}^{\frac{\zeta-1}{\zeta}} dj \right]^{\frac{\zeta}{\zeta-1}}, \quad \zeta > 1, \quad (6)$$

and that results in the labor demand:

$$l_{t,j} = N_t \left(\frac{W_t}{W_{t,j}} \right)^\zeta, \quad (7)$$

Given this labor demand, each union of type j negotiates wages to maximize the objectives of its members. In order to capture fluctuation in unemployment, we assume Calvo-style frictions to produce wage stickiness. Thus, we assume that there is a fraction $1 - \tau$ of firms that can optimize wages in the current period. For the non-optimizing unions, we assume that they use a simple indexation formula based on lagged nominal wage inflation $\pi_{w,t-1}$ and technology growth $\mu_{a,t-1}$:

$$W_{t,j} = \pi_{w,t-1} \mu_{a,t-1} W_{t-1,j}. \quad (8)$$

Meanwhile, the optimizing unions set $W_{t,j}$ to maximize the present value of the members' objectives:

$$\max_{W_t} E_t \sum_{i=0}^{\infty} (\beta\tau)^i \left[v_{t+i} W_t l_{t+i}^t - \frac{l_{t+i}^{1+\vartheta}}{1+\vartheta} \right], \quad \text{subject to} \quad l_{t+i}^t = N_{t+i} \left(\frac{W_{t+i}}{W_t} \right)^\zeta, \quad (9)$$

In this notation, l_{t+i}^t is the employment in time $t+i$ supplied by workers with the wage set in time t . v_{t+i} is household marginal utility of money at time $t+i$.

The solution to this problem is the wage Phillips curve that is used in the simulations we use in the next section.

$$\pi_{w,t} = \kappa_{w,1} x_t - \kappa_{w,2} \hat{w}_t + \beta_w E_t [\pi_{w,t+1}] + \varepsilon_{pi_{w,t}}, \quad (10)$$

where $\pi_{w,t}$ is nominal wage inflation, that is $\pi_{w,t} = \hat{w}_t - \hat{w}_{t-1} + \hat{\pi}_t$. Real wages are measured as deviations from technological growth, that is $\bar{w} = w_t - a_t$, and y_t is output gap.

On the production side, we also assume Calvo price-setting frictions. The final good firms are perfectly competitive and maximize profits:

$$\max_{Y_t} P_t Y_t - \int_0^1 P_{i,t} Y_{i,t} dj, \quad \text{subject to} \quad Y_t = \left[\int_0^1 Y_{i,t}^{\frac{\epsilon-1}{\epsilon}} dj \right]^{\frac{\epsilon}{\epsilon-1}}. \quad (11)$$

The solution to this problem delivers the familiar demand curve for the i^{th} intermediate good monopolist:

$$Y_{i,t} = Y_t \left(\frac{P_t}{P_{i,t}} \right)^\epsilon. \quad (12)$$

In this simple model, the production function of the intermediate firm is just $Y_{i,t} = N_{i,t}$. Finally, we assume that at every period there is a fraction of firms $1 - \theta$ that can re-optimize their prices while a fraction θ just keep their prices fixed $P_{i,t} = P_{i,t-1}$. The optimizing intermediate good firms then choose a price to solve the following problem:

$$\max_{P_t} E_t \sum_{j=0}^{\infty} (\beta\theta)^j [v_{t+j} P_t Y_{i,t+j} - P_{t+j} Y_{i,t+j} s_{t+j}], \quad \text{subject to } Y_{i,t} = Y_t \left(\frac{P_t}{P_{i,t}} \right)^\epsilon, \quad (13)$$

After log-linearizing the solution to this problem around the steady state, one obtains the NK Phillips curve:

$$\pi_t = \kappa_p \hat{w}_t + \beta E_t [\pi_{t+1}] + \varepsilon_{pi,t}, \quad (14)$$

We close the model with a standard monetary policy reaction function that features interest rate smoothing and estimated responses to inflation and output deviations:

$$\hat{i}_t = \rho \hat{i}_{t-1} + (1 - \rho) [\rho_\pi \hat{\pi}_t + \rho_x x_t] + \varepsilon_{i,t}, \quad (15)$$

where \hat{i}_t is the nominal 1-year ahead policy rate as deviation from the neutral rate and ε_i are monetary policy shocks.

B. Expectation formation processes

This section is going to zoom in on the role that expectation formation processes have on the dynamic of main macroeconomic variables. The strategy is to estimate the model described in III.A under different expectation formation processes. With this strategy, we aim to isolate the role of expectations as a driving force of economic variables when different shocks hit the economy.

Monetary policy in the RE version of similar models has been studied extensively, for example in Svensson (1999) and Clarida, Gali, and Gertler (1999). This section compares the model dynamics under the standard RE formation process with the one implied by limited rationality models. The rational expectations model assume that households use all the information available in the model, including all parameters and variables, to form their expectations. In other words, expectations are model consistent and in the absence of further unexpected shocks $E_t [y_{t+1}] = y_{t+1}$. The limited rationality model we use is the adaptive learning expectations as developed in Slobodyan and Wouters (2012b) and Slobodyan and Wouters (2012a) framework. In this model, households use and update statistical models with a smaller set of

variables at every period. Households learn from mistakes and use their forecasts errors to update parameter values with a Kalman filter.

Households use a limited information set, X_j , and form their expectations linearly with:

$$y_{t+1}^j = X_t^j \beta_t^j, \quad (16)$$

for all the variables j that appear with leads in our equilibrium equations. In the terminology of the learning literature, this linear equation is called the Perceived Law of Motion (PLM). While any kind of linear model would work in this framework, the one with the best out-of-sample forecast performance is a simple univariate $AR(2)$ model. That is, the information set X_j contains a constant and two lags of y_{t+1}^j . With this model, the leading variables of the model can be cast in a SURE format:

$$\begin{pmatrix} Y_t^1 \\ Y_t^2 \\ Y_t^3 \\ \vdots \\ Y_t^m \end{pmatrix} = \begin{pmatrix} X_t^1 & 0 & \dots & 0 \\ 0 & X_t^2 & \dots & 0 \\ 0 & 0 & X_t^3 & 0 \\ \vdots & \vdots & \vdots & \vdots \\ 0 & 0 & 0 & X_t^m \end{pmatrix} \begin{pmatrix} \beta_t^1 \\ \beta_t^2 \\ \beta_t^3 \\ \vdots \\ \beta_t^m \end{pmatrix} + \begin{pmatrix} \eta_t^1 \\ \eta_t^2 \\ \eta_t^3 \\ \vdots \\ \eta_t^m \end{pmatrix} \quad (17)$$

Where η are the errors with a non-diagonal variance-covariance matrix Σ . In every period, the learning update to the B vector (the stacked vector containing the β for all models) is done with a Kalman filter mechanism:

$$B_{t|t} = B_{t|t-1} + P_{t|t-1} X_{t-1} [\Sigma + X'_{t-1} P_{t|t-1} X_{t-1}]^{-1} (y_{t+1}^j - X_t^j B_{t|t-1}), \quad (18)$$

with the transition equation

$$B_{t+1|t} = \bar{B} + F (B_{t|t} - \bar{B}), \quad (19)$$

where F is a diagonal matrix with $\rho \leq 1$ on the main diagonal. Finally, the corresponding covariance matrix and its transition are given by:

$$P_{t|t} = P_{t|t-1} - P_{t|t-1} X_{t-1} [\Sigma + X'_{t-1} P_{t|t-1} X_{t-1}]^{-1} (X'_{t-1} P_{t|t-1}), \quad (20)$$

and

$$P_{t+1|t} = F P_{t|t} F' + V. \quad (21)$$

Once the coefficients for the beliefs are updated, $B_{t|t-1}$, the households form their expectations for the lead variables as in (16). If we replace these lead variables in the model solution, we obtain a time-dependent backward-looking representation of the model:

$$\begin{bmatrix} y_t \\ w_t \end{bmatrix} = \alpha_t + T_t \begin{bmatrix} y_{t-1} \\ w_{t-1} \end{bmatrix} + R_t \epsilon_t. \quad (22)$$

Differently from the rational expectations solution, the matrices α_t , T_t and R_t are time dependent. They depend on the parameters that define policy function and on the forecast model summarized by the vector B_t . The system described in (22) is the Actual Law of Motion (ALM) of the model.

IV. DATA AND MODEL ESTIMATION

A. Data

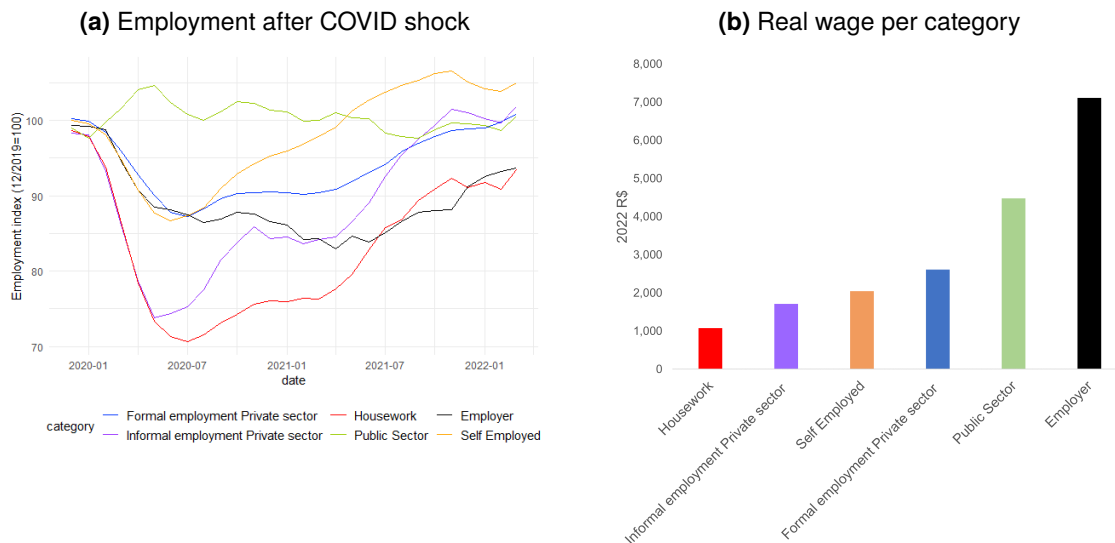
The model described in Section 3 is estimated with quarterly macroeconomic data from 2000Q1 to 2019Q4 for Brazil and the USA. The set of variables included in the estimation are the output gap, the real wage gap, annualized quarterly price inflation deviation from target², and the policy rate.

As previously documented in Howard, Rich, and Tracy (2022), measures of average wage per worker in the USA suffered from changes in the workforce composition. Lower wage workers suffered larger employment losses than high wage workers. That created an artificial increase in average wage through this composition effect. The same qualitative change in workforce composition happened in Brazil. Housework and informal workers are the least paid category and the one that suffered the largest employment losses (Fig 1). Since our model does not have enough structure to explain this workforce composition change, we use the composition-constant real wage calculated by Howard, Rich, and Tracy (2022) for the USA and use the same logic to calculate a composition-constant real wage for Brazil. That is, we assume that the composition of employment is fixed at the pre-COVID levels. The adjustment at this aggregate level does not completely correct for the workforce composition change, but it lessens its effect on the real average wage series that we use for Brazil (Fig 2).

²The core PCE and the core IPCA are used for the US and Brazil, respectively.

We calculated the output gap and the real wage gap³ with both an HP filter and a linear filter. We use the methodology developed in (Sun and Tsang (2019)) to make our filter selection. Thus, the results presented in the next section use the linear filter, which was chosen because the model has better out-of-sample forecast performance for wages and prices. Finally, given that the neutral interest rate in Brazil seemed to have changed dramatically during the period (Perrele and Roache (2014)), we calculate \hat{i}_t as the deviation of the policy rate from its linear trend. To take into account a possible mis-measurement in the neutral interest rate policy, we add an interest rate measurement equation to the Brazil's estimated model.

Figure 1. Brazil: Low wage workers suffered larger employment losses

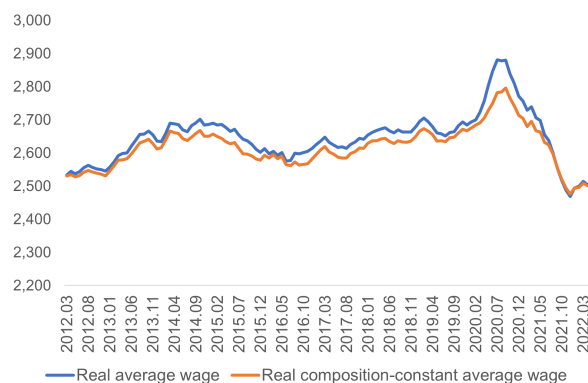


The model is estimated using the Bayesian likelihood methods with standard priors as in Smets and Wouters (2007). Some parameters have weak identification and are calibrated using standard values in the literature⁴.

The remaining 12 parameters that reflect the nominal and real frictions in the model as well as those pertaining to the exogenous shock processes are estimated. The learning parameter is also estimated jointly with other parameters. Table 1 shows the prior distributions of the estimated parameters.

³We use our composition-constant measure for wages and filter the trend out. The idea is to filter labor productivity improvements out of the data.

⁴That is the case for the slope of the Phillips curve in the US model

Figure 2. Real composition-constant wages did not increase as much**Table 1. Prior Distribution of the Estimated Parameters**

Param.	Distr.	Mean	Std.	Range	Description
ρ_y	Beta	0.75	0.1	[0, 0.999]	Backward-lookingness of output
σ_y	Beta	0.2	0.1	[0, 0.999]	Forward-lookingness of output
σ_i	Beta	0.8	0.05	[0, 0.999]	Output response to interest rate
β	Beta	0.3	0.1	[0, 0.999]	Forward-lookingness of inflation
ρ	Beta	0.3	0.1	[0, 0.999]	Policy rate smoothing
ρ_π	Normal	0.5	0.15	[0.01, 3]	Policy rate response to inflation
ρ_x	Beta	0.4	0.1	[0.001, 0.999]	Policy rate response to output
ρ_{ε_x}	Beta	0.75	0.1	[0, 0.999]	IS curve shock persistence
σ_{ε_x}	Inv. Gamma	0.2	2	[0, 100]	Demand shock standard deviation
σ_{ε_π}	Inv. Gamma	0.2	2	[0, 100]	Inflation shock standard deviation
$\sigma_{\varepsilon_{\pi_w}}$	Inv. Gamma	0.2	2	[0, 100]	Wage inflation shock standard deviation
σ_{ε_i}	Inv. Gamma	0.2	2	[0, 100]	Monetary policy shock standard deviation

Table 2. Posterior Estimates for RE and AL Models

Param.	RE		AL	
	Mean	Std.	Mean	Std.
ρ_y	0.419	0.073	0.533	0.087
σ_y	0.189	0.090	0.191	0.087
σ_i	0.292	0.094	0.245	0.094
β	0.266	0.108	0.517	0.127
β_w	0.256	0.150	0.506	0.160
κ	0.084	0.033	0.169	0.061
$\kappa_{w,1}$	0.044	0.025	0.131	0.036
$\kappa_{w,2}$	0.092	0.050	0.142	0.077
ρ	0.841	0.021	0.838	0.021
ρ_π	0.587	0.129	0.525	0.130
ρ_x	0.136	0.044	0.094	0.034
ρ_{ε_x}	0.606	0.106	0.675	0.092
σ_{ε_x}	1.570	0.225	0.706	0.137
σ_{ε_π}	0.494	0.085	0.317	0.092
$\sigma_{\varepsilon_{\pi_w}}$	0.851	0.10	0.628	0.120
σ_{ε_i}	0.174	0.025	0.139	0.026

B. Model fit

In Table 3, we report the in-sample forecast performance of the model estimated for Brazil. The AL model outperforms the RE model regardless of our choice of the filter (linear or HP). In the AL model, the difference in the log marginal likelihood between the linear and HP filter cases is also less.

Table 3. In-Sample Forecast Performance for RE and AL Models

Log marginal likelihood	RE	AL
Linear Filter	-173.9	-98.7
HP Filter	-169.04	-93.64

In Table 4, we compare the out-of-sample forecast performance of the model estimated for Brazil in terms of root mean squared errors under different assumptions⁵. We report results for the four variables, real wage gap, the output gap, policy rate and inflation, at different forecast horizons. The biggest gain is realized in the short term forecast of inflation under AL with a linear filter. The AL approach also shows better forecasts for the 1-quarter ahead forecast of the output gap and real wage gap. For these two variables, as forecast horizon lengthens, forecast performance of both the RE and AL approach deteriorates, with AL deteriorating at a faster speed. At the 8-quarter-ahead horizon, the forecast performance of the two approaches are mostly similar for wages and inflation.

Table 4. Out-of-Sample Forecast Performance for RE and AL Models

	Real Wage Gap		Output Gap		Policy Rate		Inflation	
Linear Filter	RE	AL	RE	AL	RE	AL	RE	AL
1-quarter ahead RMSE	0.32	0.29	0.78	0.32	0.06	0.31	0.33	0.31
4-quarter ahead RMSE	0.61	0.72	2.47	3.73	0.24	0.22	0.39	0.36
8-quarter ahead RMSE	0.50	0.52	2.60	4.35	0.19	0.48	0.22	0.25
HP Filter	RE	AL	RE	AL	RE	AL	RE	AL
1-quarter ahead RMSE	0.09	0.53	0.02	0.11	0.05	0.03	0.20	0.28
4-quarter ahead RMSE	1.43	1.44	0.50	0.88	0.73	0.44	0.80	0.64
8-quarter ahead RMSE	1.18	1.13	1.02	1.05	1.52	0.25	0.49	0.41

V. MODEL SIMULATION RESULTS

A. Comparison of the estimation results for Brazil and the USA

The historical shock decomposition sheds light about the different timing of monetary policy responses in the two countries. After very large negative inflation shocks in 2020, Brazil

⁵The estimation sample initially ends in 2016Q1 and is recursively expanded in progressing with the forecasting exercise

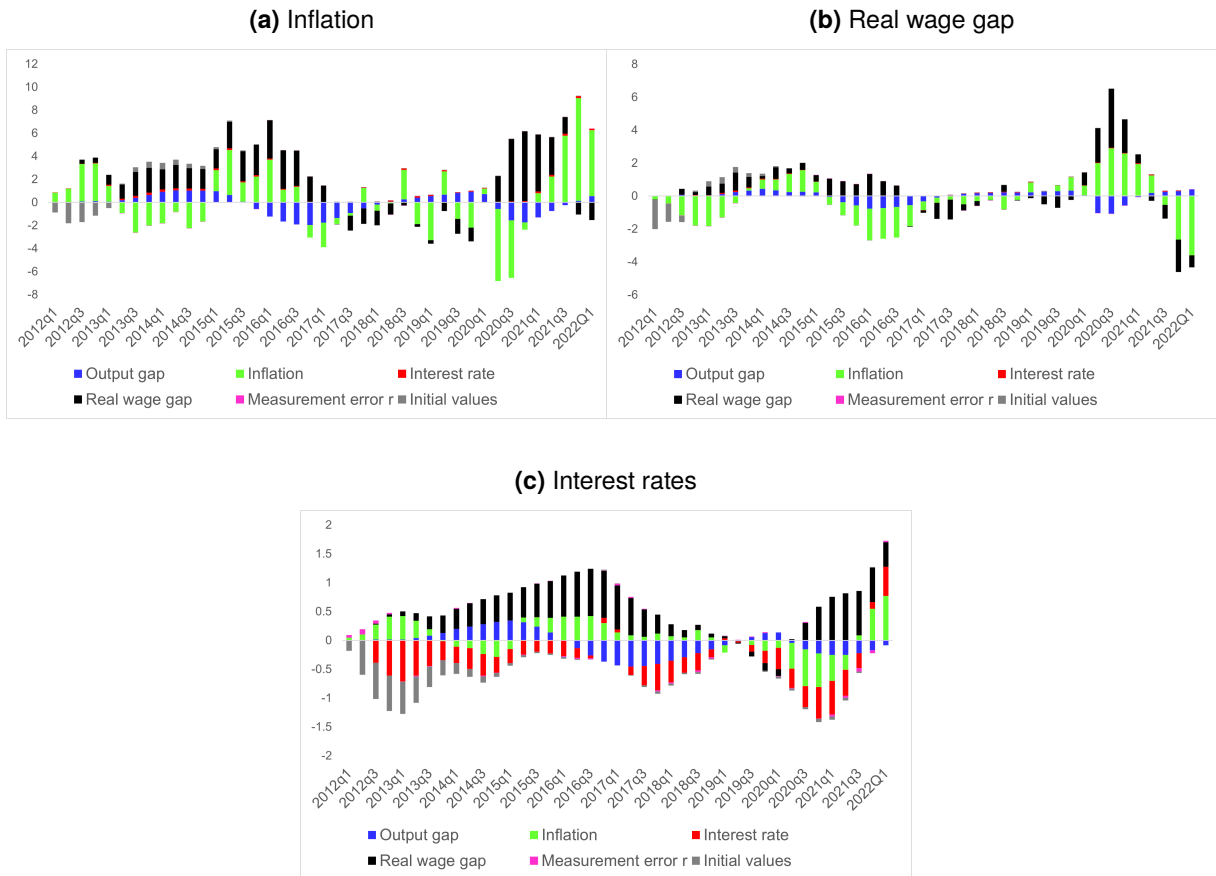
experienced large cost-push shocks in 2021 that peaked in 2021Q4 and that have been offset by negative real wage shocks recently (Fig 3a). Meanwhile, the USA has been experiencing large real wage shocks that explain about a third of the recent inflation (Fig 4a). The large real wage shocks in the USA (Fig 4b) also mostly explains the difference in the wage dynamics in the two countries (Fig 3b). The large cost-push shocks in both countries most likely reflect developments on the supply side related to the pandemic and Russia's war in Ukraine. Finally, there is a stark difference in monetary policy responses in the two countries. While Brazil had diminishing negative contributions from interest rates shocks starting in 2021Q2 that became positive in 2021Q4 (Fig 3c), the USA went in the opposite direction with increasing negative contributions from interest rate shocks in 2021 (Fig 4c).

One of the motivation questions in the introduction was if there is any particular feature to an emerging economy that justified this earlier response by Brazil Central Bank and what role expectations played in shaping these decisions. Our estimation results, shown in figure 5, help to answer this question.

If inflation expectations are well anchored, we would expect the lag inflation coefficients in the household's forecasting models to be small and the mean inflation to be zero ⁶. The first striking result in figure 5 is that expectations in Brazil depend a lot more on past outcomes than in the US. This can be seen when adding the coefficients on the first two lags of both inflation and wages. The case of real wages expectations are even more striking as they seem substantially more persistent in Brazil. The second result to highlight from this figure is the coefficient stability over the last ten years before the pandemic. The coefficient reflecting the mean expected inflation was zero as households expected inflation to be at the central bank target. The pandemic challenged this stability in both countries, but earlier and by more in Brazil. Mean expected inflation surged in the first quarter of 2021 in Brazil, as the country started seeing inflation outcomes above target. Meanwhile, mean expected inflation in the US increased by less and only by the third quarter of 2021.

Looking at the models' impulse response functions at the last data point (2021Q4) is also informative about the different role that AL expectations play in the two countries model dynamics (see figures 6 and 7). First thing to note is that inflation expectations in Brazil always move by more than in the US, regardless of the shock. As inflation expectations respond more

⁶Inflation here is measured at an annual rate and in deviations from target.

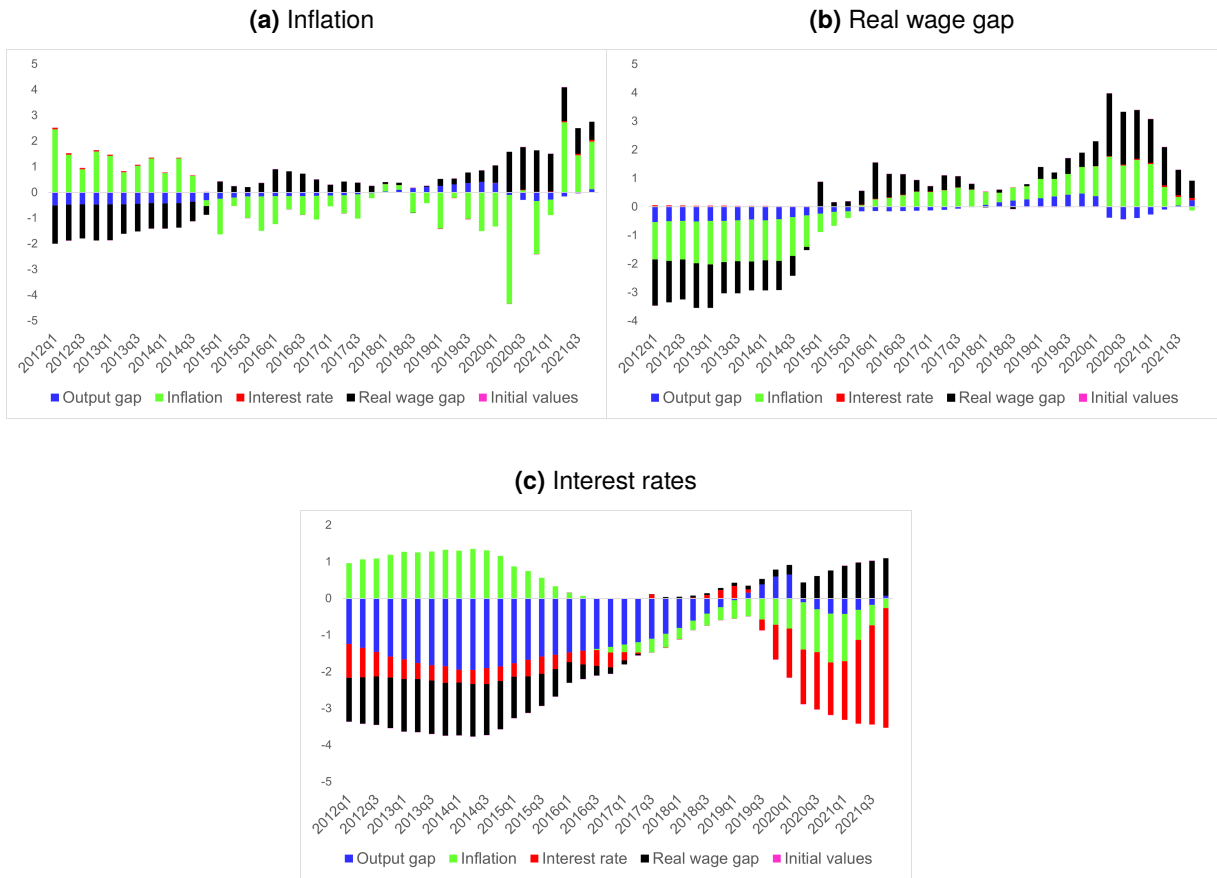
Figure 3. Brazil: Shock decomposition

to past inflation outcomes, as reflected in figure 5, there is a feedback of inflation to inflation expectations that keep inflation higher for longer for all the shocks in the model. This higher inflation response happens despite the stronger monetary policy response.

B. Adaptive learning expectations could increase the cost of stabilization

The estimated models allow us to produce conditional forecasting scenarios to isolate the role of different expectations formations in the current inflationary environment. The scenarios described in figure 8 share a common set of shocks. In particular, we assume that, in both scenarios, Brazil faces an unexpected cost-push shock that takes actual inflation to what we observed in 2022Q2 and with a half-life of 6.5 quarters. Moreover, we assume that the output

Figure 4. USA: Shock decomposition



shock filtered by the models just unwind according to the estimated $AR(1)$ process in equation 4. With this strategy, we aim to isolate as much as possible the role of expectations formations in the dynamics going forward.

Inflation outcomes are more favorable under RE expectations (the blue line in figure 8) and are back to target at the beginning of 2024. The unexpected inflation shocks result in inflation outcomes that are substantially higher than inflation expectations, which peak in the second quarter of 2022. These lower expectations contribute to the decisive fall in inflation and interest rates over 2024.

The inflation inertia created under the estimated adaptive learning scenario (the black line in figure 8) results in inflation well above Brazil’s central bank target for the next three years. Inflation remains at an annual rate of 4.8 percent by 2024Q4, despite tighter monetary policy

Figure 5. Inflation and wages expectations respond to past values by more in Brazil

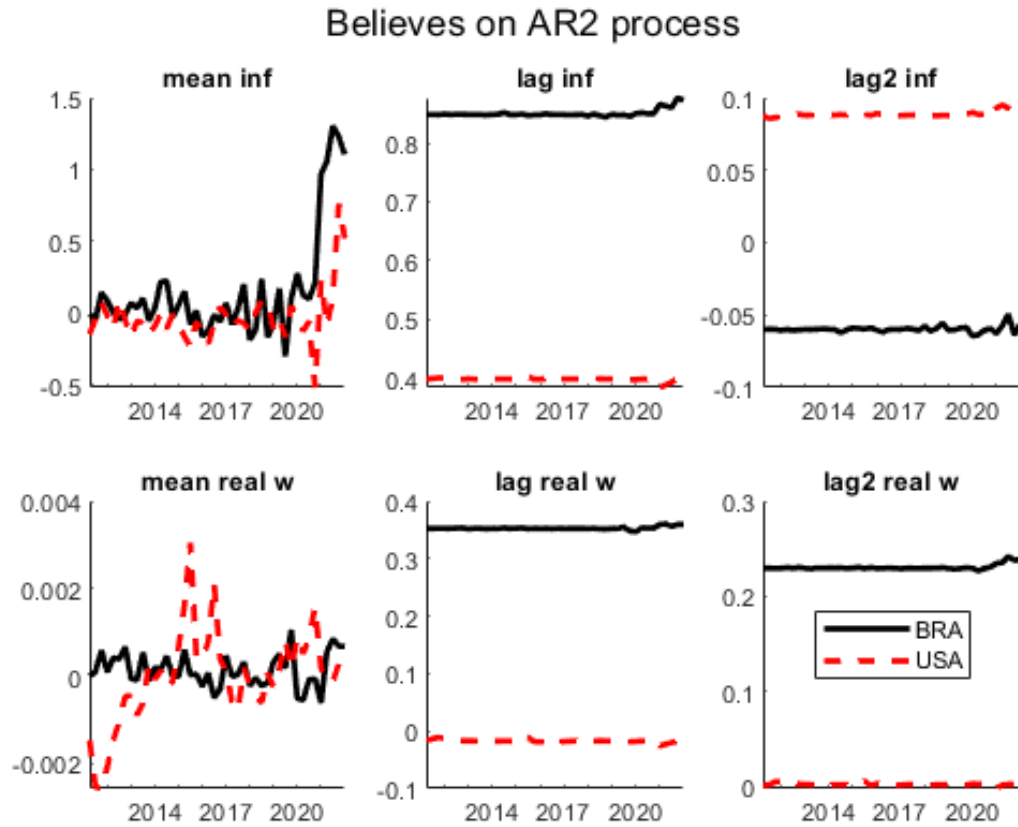
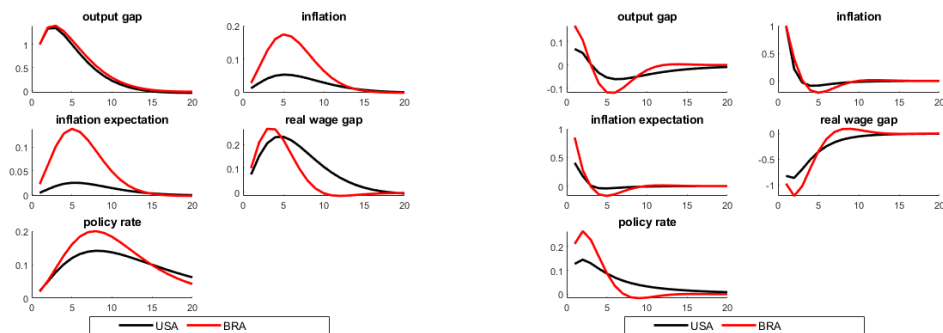


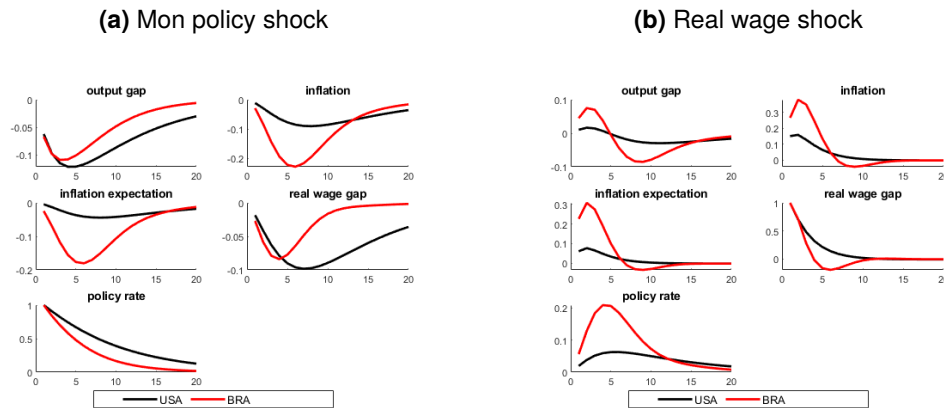
Figure 6. Impulse response functions for specific shocks

(a) Demand shock

(b) Inflation shock



Note: Inflation expectation is just the model's $t+1$ variables.

Figure 7. Impulse response functions for specific shocks

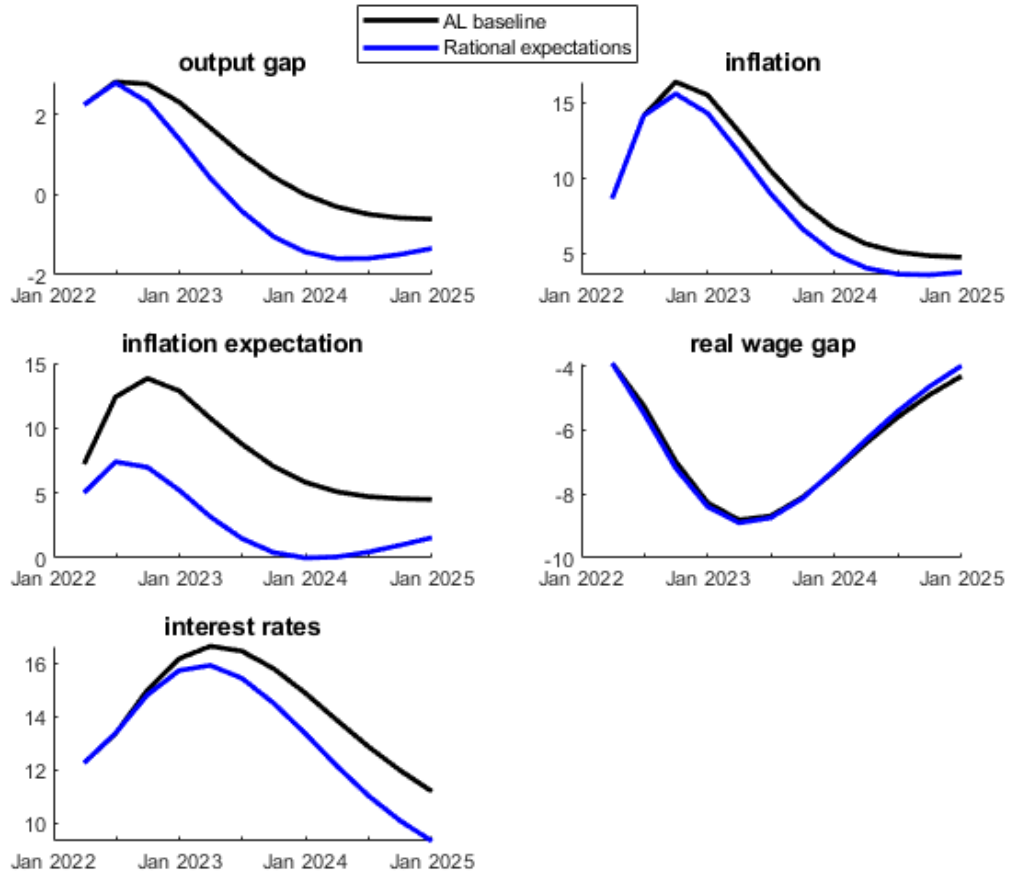
and a negative output gap from the first quarter of 2024. Inflation starts to come down as the negative real wage gap more than offsets the remaining cost push shocks. The source of the current shocks driving the economy, in this case cost-push shocks, explains why the real wage gap is negative amid a context of high inflation (see figure 6b).

The main reason for this negative outcome is the sharp response in inflation expectations as a result from high inflation outcomes. Households start to believe that future inflation will run a lot higher than the target and these expectations contribute to keep inflation above target despite a negative output gap.

Our modelling strategy also contributes to the current debate initiated by Cochrane (2022) on adaptive expectations. We show how important it is to include labor market developments when discussing the effect of expectation formations. A price Phillip's curve that only includes the output gap, as in Cochrane (2022), and not a labor sector would predict that, under adaptive expectations, the only way to lower inflation is with a negative output gap. We show that the negative real wage gaps, meaning that real wage does not keep up with labor productivity, enable an anchoring of inflation even with fully adaptive expectations.

Given the negative inflation outlook under AL expectations, we can then ask what a central bank minimizing a welfare function would do in this scenario, which is addressed in the next section.

Figure 8. Inflation is stickier when expectations are adaptive learning



Note: Inflation expectation is just the model's $t+1$ variables.

C. Optimal monetary policy discussion

In this section, we use the same strategy as in Alichí and others (2015) and instead of using the estimated monetary policy function as in equation (15), we assume that the central bank chooses a path for interest rate so as to minimize the following welfare loss function:

$$\min_{\hat{i}_t} E_t \sum_{t=0}^{\infty} \beta^t \left(0.75(\hat{i}_t - \hat{i}_{t-1}) + \hat{y}_t^2 + \hat{\pi}_t^2 \right), \quad (23)$$

note that we assume equal weights for output gap \hat{y} and inflation deviations from target $\hat{\pi}$. We also assume a role for interest rate smoothing.

Thus, we define the optimal monetary policy path as the interest rate path that minimizes this function. In this section simulations, we further assume that the central bank has full knowledge of the current shocks hitting the economy, know all the future shocks that will hit the economy and also have full knowledge of how their actions impact expectations, which still follow the AL framework.

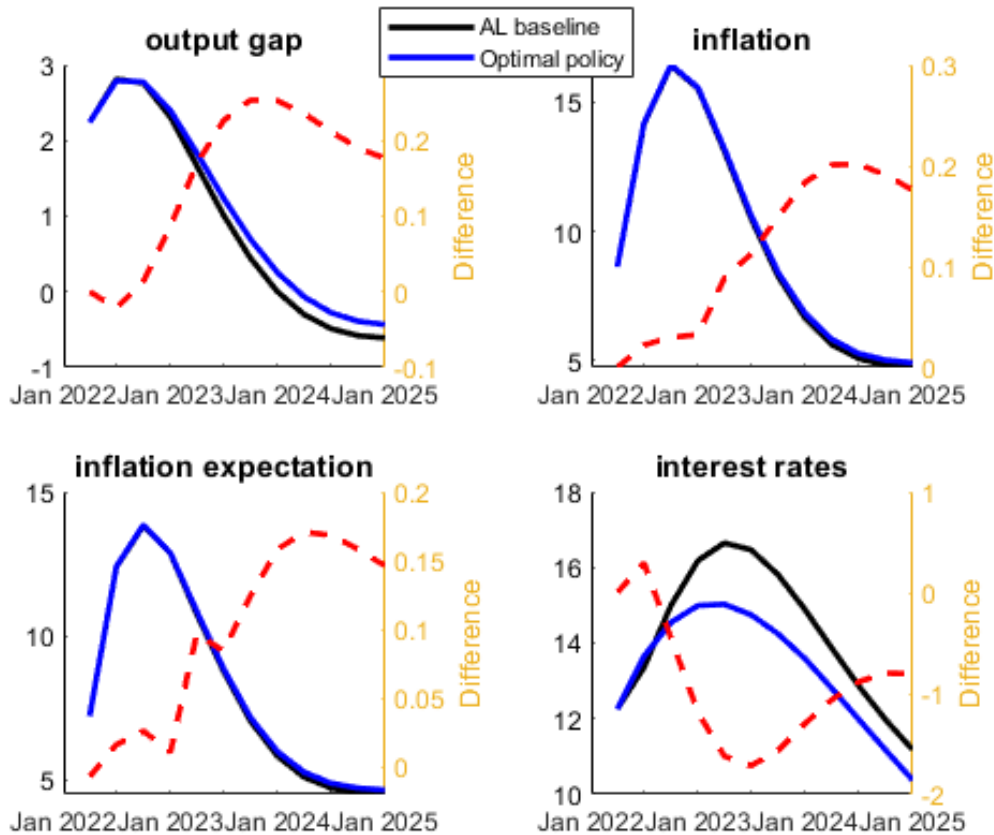
In our model, the central bank has three channels to influence inflation. The standard direct channel in which a tighter policy cools off demand, lowering the output gap and hence inflation. The other two channels operate through inflation expectations. By tightening policy, the central bank lowers current inflation that enters in the $AR(2)$ inflation expectations equation, lowering next period expectations. Finally, the central bank can affect households' learning process (the coefficients in the $AR(2)$ equation). By seeing less inflation this period than they have expected, households update their model of how past inflation matters for future inflation. The combined effect of these three channels can be seen in figure 9. The optimal policy prescribes front-loading the interest rate tightening and then easing compared to the estimated monetary policy reaction function. The blue line in figure 9 shows the optimal interest rate path and the secondary axis shows the difference between the two lines. The optimal path has policy tighter by 35 basis points in the 2022Q2 but then looser over the next two years and a half. With that policy, the output gap does not fall as much and inflation is a bit higher than in the estimated monetary policy reaction function. Note that it takes time for the deviation in monetary policy to influence inflation and that the difference gets higher over time. The more aggressive tightening of the estimated monetary policy reaction function is also a result of not incorporating the full path of inflation shocks in the interest rate decisions.

VI. CONCLUSIONS

After a long period of stable inflation and inflation expectations, the COVID-19 crises ramifications produced a surge in global inflation not seen since the 1980s. In this context, it is important to understand how expectations are formed and how they can affect the macroeconomic outlook going forward.

This paper introduced a standard New Keynesian model that includes a wage and prices Phillip's curves but differ in the way that households form expectations about future variables. We move away from the standard assumption of rational expectations and include "limited ra-

Figure 9. The central bank should front-load tightening and then ease



tionality" backward-looking expectation formation process in which households learn from previous forecasting mistakes. This modelling strategy creates a new mechanism through which central banks can affect inflation. In particular, central banks can affect households' learning process. Our first important result is that a standard DSGE model with AL expectations outperform the model with RE in terms of its in-sample and out-of-sample forecasting performance.

Our modelling strategy also shows how important it is to include labor market developments when discussing the effect of expectation formations. A price Phillip's curve that only includes the output gap and not a labor sector would predict that, under AL expectations, the only way to lower inflation is with a negative output gap. In a model with labor markets, this condition is not necessary and a negative real wage gap can act as an anchor to inflation even with fully adaptive expectations.

Our results also rationalize why Emerging Market central banks tightened monetary policy earlier than Advanced Economies in response to bad inflation news. We argue that if inflation expectations are likely to start drifting, then aggressive monetary policy reactions are warranted. Our learning model captures a recent example in Brazil and rationalizes an early monetary policy response by the central bank.

We then simulated scenarios to represent the current situation with a positive output gap and rising inflation. We show that it is optimal for monetary policy to respond sooner and more strongly under AL expectations than under RE expectations. The self-enforcing tendency to the target in RE expectations model provide an additional anchor. Finally, the optimal monetary policy response seeks to influence the learning process and avoid that believes of higher inflation lead to higher costs of disinflation.

REFERENCES

- Alichi, Ali, Kevin Clinton, Charles Freedman, Ondrej Kamenik, Michel Juillard, Douglas Laxton, Jarkko Turunen, and Hou Wang, 2015, “Avoiding Dark Corners: A Robust Monetary Policy Framework for the United States,” *IMF Working Papers*, Vol. 2015, No. 134.
- Bems, Rudolfs, Francesca Caselli, Francesco Grigoli, and Bertrand Gruss, 2021, “Expectations’ anchoring and inflation persistence,” *Journal of International Economics*, Vol. 132(c).
- Cho, In-Koo, and Kenneth Kasa, 2015, “Learning and Model Validation,” *Review of Economic Studies*, Vol. 82, No. 1, pp. 45–82.
- Clarida, Richard, Jordi Gali, and Mark Gertler, 1999, “The Science of Monetary Policy: A New Keynesian Perspective,” *Journal of Economic Literature*, Vol. 37, No. 4, pp. 1661–1707.
- Cochrane, John, 2022, “Is the Fed Fisherian?” Available at <https://johnhcochrane.blogspot.com/2022/04/is-fed-fisherian.html> (2022/04/22).
- Coibion, Olivier, and Yuriy Gorodnichenko, 2015, “Information Rigidity and the Expectations Formation Process: A Simple Framework and New Facts,” *American Economic Review*, Vol. 105, No. 8, pp. 2644–78.
- da Gama Machado, Vicente, 2012, “Monetary Policy, Asset Prices and Adaptive Learning,” *Banco Central do Brasil Working Papers*, Vol. 2012, No. 274, p. A001.
- Erceg, Christopher J., and Andrew T. Levin, 2003, “Imperfect credibility and inflation persistence,” *Journal of Monetary Economics*, Vol. 50, No. 4, pp. 915–944.
- Eusepi, Stefano, Marc P. Giannoni, and Bruce Preston, 2018, “Some implications of learning for price stability,” *European Economic Review*, Vol. 106, pp. 1–20.
- Eusepi, Stefano, Emanuel Moench, Bruce Preston, and Carlos Viana de Carvalho, 2019, “Anchored Inflation Expectations,” CEPR Discussion Papers 13900, C.E.P.R. Discussion Papers.
- Evans, George W., and Seppo Honkapohja, 2001, *Learning and Expectations in Macroeconomics* (Princeton University Press).
- Ferreira, Roberto Tatiwa, Carlos Roberto Chagas Goes, and Elano Ferreira Arruda, 2018, “Central Bank Credibility and Inflation Dynamics in Brazil,” *The Empirical Economics Letters*, Vol. 17, No. 2, pp. 236–242.
- Galí, Jordi, Frank Smets, and Rafael Wouters, 2012, “Unemployment in an Estimated New Keynesian Model,” *NBER Macroeconomics Annual*, Vol. 26, pp. 329–360.
- Ha, Jongrim, M. Ayhan Kose, and Franziska Ohnsorge, 2019, *Inflation in Emerging and Developing Economies : Evolution, Drivers and Policies* (World Bank).

- Howard, Sean, Robert Rich, and Joseph Tracy, 2022, “Real Wages Grew During Two Years of COVID-19 After Controlling for Workforce Composition,” Available at <https://www.dallasfed.org/research/economics/2022/0215/> (2022/02/15).
- IMF, 2016, “Global disinflation in a era of constrained monetary policy,” *World Economic Outlook*, pp. 121–170.
- , 2018, “Challenges for monetary policy in emerging markets as global financial conditions normalize,” *World Economic Outlook*, pp. 101–125.
- Kamber, Günes, Madhusudan Mohanty, and James Morley, 2020, “What drives inflation in advanced and emerging market economies?” *BIS Papers chapters, in: Bank for International Settlements (ed.), Inflation dynamics in Asia and the Pacific*, Vol. 111, pp. 21–36.
- Milani, Fabio, 2007, “Expectations, learning and macroeconomic persistence,” *Journal of Monetary Economics*, Vol. 54, pp. 2065–2082.
- Orphanides, Athanasios, and John Williams, 2004, “Imperfect Knowledge, Inflation Expectations, and Monetary Policy,” in *The Inflation-Targeting Debate*, NBER Chapters (National Bureau of Economic Research, Inc).
- Perreli, Roberto, and Shaun K. Roache, 2014, “Time-Varying Neutral Interest Rate - The Case of Brazil,” Techn. rep., International Monetary Fund.
- Slobodyan, Sergey, and Raf Wouters, 2012a, “Learning in a Medium-Scale DSGE Model with Expectations Based on Small Forecasting Models,” *American Economic Journal: Macroeconomics*, Vol. 4, No. 2, pp. 65–101.
- , 2012b, “Learning in an estimated medium-scale DSGE model,” *Journal of Economic Dynamics and Control*, Vol. 36, No. 1, pp. 26–46.
- Smets, Frank, and Rafael Wouters, 2007, “Shocks and Frictions in US Business Cycles: A Bayesian DSGE Approach,” *American Economic Review*, Vol. 97, No. 3, pp. 586–606.
- Sun, Xiaojin, and Kwok Ping Tsang, 2019, “What cycles? Data detrending in DSGE models,” *Studies in Nonlinear Dynamics Econometrics*, Vol. 23, No. 3, p. 20170084.
- Svensson, Lars E.O., 1999, “Inflation targeting as a monetary policy rule,” *Journal of Monetary Economics*, Vol. 43, No. 3, pp. 607–654.
- Val, Flavio, Wagner Gaglianone, Marcelo Klotzle, and Antonio Carlos Pinto, 2017, “Estimating the Credibility of Brazilian Monetary Policy using Forward Measures and a State-Space Model,” *Banco Central do Brasil Working Papers*, Vol. 2017, No. 463, p. A001.



PUBLICATIONS

The Distributional Impacts of Worker Reallocation: Evidence from Europe
Working Paper No. WP/23/19